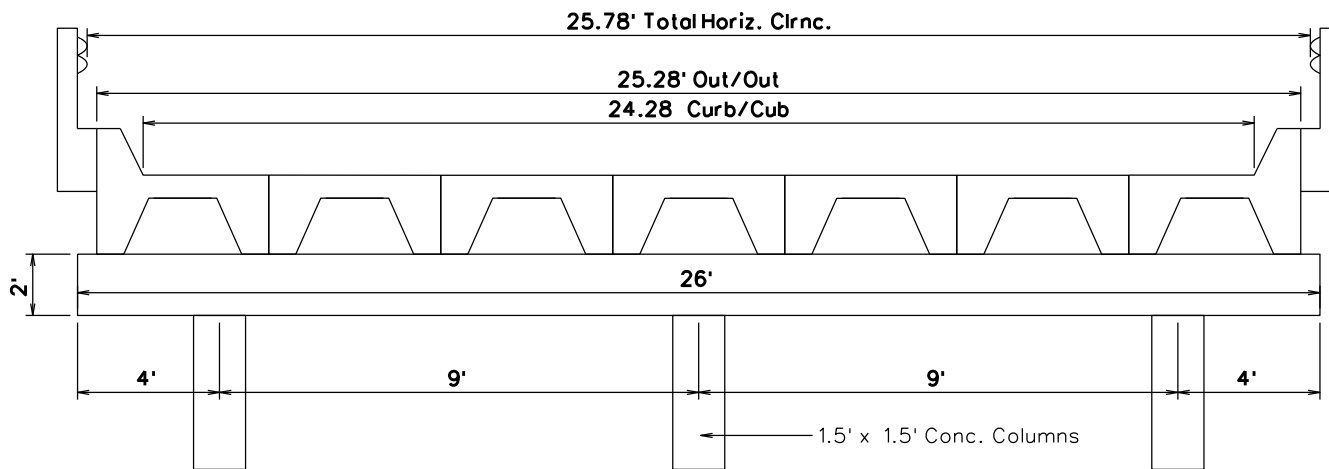
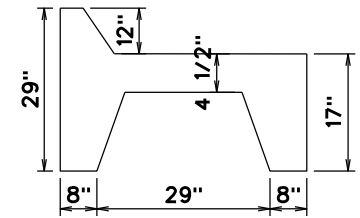


\*Not to Scale

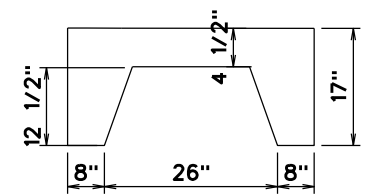
Bridge No. M1025	Dist. 5	Co. 33/Izard
Logmile 10.25	Rt. 56	Sect/Zone - 2
Date Drawn 6/21/10	Date Redrawn 3/21/17	By: KBL



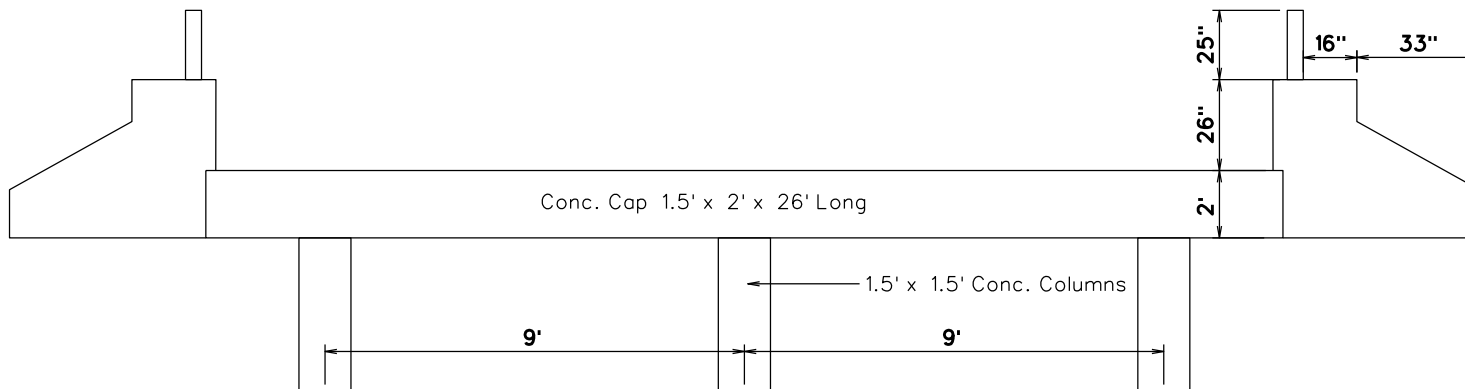
Typical of Bents 1 & 2



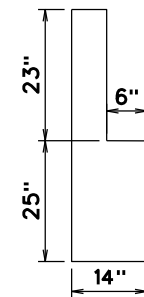
Ext. Units



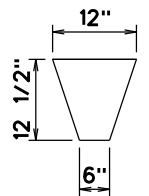
Int. Units



Typical of Abut. 1 & 2



Guardrail Post



Diaphragms

\*Not to Scale

Bridge No. M1025	Dist. 5	Co. 33/Izard
Logmile 10.25	Rt. 56	Sect/Zone - 2
Date Drawn 6/21/10	Date Redrawn 3/21/17	By: KBL